

# SWA16J

## SWA Articulating Boom lifts(Diesel)



### Standard Functions

Proportional Control	Anti extrusion device	Tilt Protection System	Load Sensing System
Fault Diagnosis System	Hydrostatic Automatic Leveling System	Buzzer	The Horn
Standard 4x4 Driven	Swing out engine tray	360° Degree Continuous Rotation Of Turntable	Flashing Beacon
Emergency Descent System	Emergency Pump	Swing Bridge Chassis	

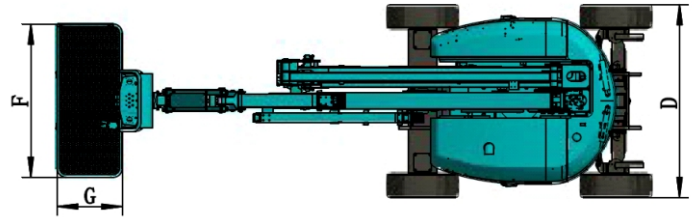
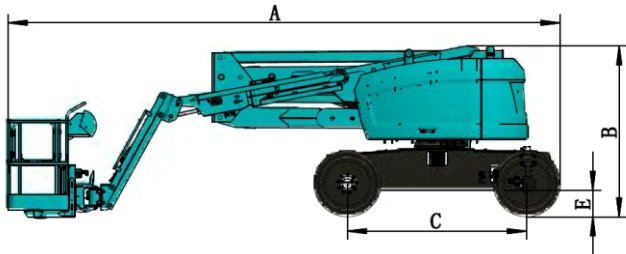
### Optional Functions

Air line to platform	Biodegradable Hydraulic Fluid	AC power cord to platform	Platform Working Light
GPS Tracking System	Foam Filled Tire	Long Distance Communication System	

# TECHNICAL PARAMETERS



## SWA16J

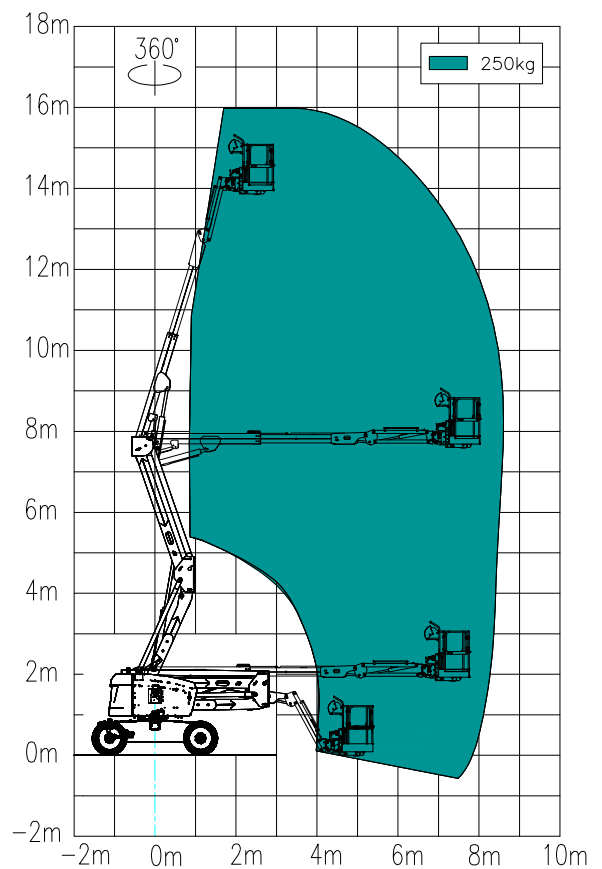


### Dimension

	Max. working height	16m
	Max. platform height	14m
	Max. platform range ability	8.02m
	Max. working range ability	8.62m
	Max. up and over clearance	7.6m
A	Length - storage	6.93m
	Length - transport	5.9m
B	Height - storage	2.17m
C	The wheelbase	2.25m
D	Overall width	2.3m
E	Ground clearance - middle	0.35m
F/G	Size of working platform	1.83x0.76m

### Performance

	Rated load	250kg
	Max. number of workers	2
	Platform rotation	160°
	Rotating turntable	360° continuous
	Turntable tail swing	0
	Max. Traveling speed - Storage	6.8km/h
	Max. Traveling speed - Lifting	0.8km/h
	Turning radius - Inside/outside	2.09/4.98m
	Max. gradeability (counterweight upwards)	40%
	Max. gradeability (counterweight downwards)	45%
	Max. allowable angle of chassis work	5°
	Power source	Kubota v2403
	Power and speed of engine	47.9KW/2700rpm
	Auxiliary power unit	12V
	Hydraulic tank capacity	82L
	Fuel tank capacity	73L
	Tire	33x12-20
	Overall weight	7650kg



Working rang of SWA16J

\* The working height equals to the platform height plus 2 m.

\* The gradeability is adaptive to driving on slopes; refer to the Operation Manual for relevant levels of gradeability.

